



COPPER FORUM³⁸

ARCHITECTURE

COPPER COMPARISONS

One of this magazine's strengths is its ability to offer comparisons of different architectural approaches to a single material - copper.

Our first two buildings share sculptural, symbolic responses to historical contexts: a city's ancient links with fire in Poland (page 4) and a fierce Roman battle in Lower Saxony (page 8). The latter also begins a triptych of buildings exploring dialogues between copper and timber - initially as opposing armies, then reinforcing the shoreline of an Austrian lake (page 10) and finally expressing the glacial forces that formed Iceland's natural landscape (page 12).

Change is the defining theme of two very different cultural buildings where transformations subvert the permanence of their traditional roles. The Paris Conservatoire Claude Debussy comes to life with a copper façade animated by perforated folding shutters (page 16). In Gdansk, the massive, copper-clad roof of the new Shakespearean Theatre can be opened to the sky or closed, in conjunction with various internal arrangements, to give different theatrical experiences (page 20).

Our next two projects are exemplars of the skilful reconciliation of technical, architectural and cultural demands defined by their typologies. The ubiquitous sports hall is handled with deceptive simplicity and style in Villach, Austria, characterised by a transparent copper facade (page 24). Meanwhile in Lyon, a new municipal archive provides the environmental conditions needed to protect documents whilst maximising public access and generating a real sense of civic pride (page 28).

Register for Copper Architecture Forum - copperconcept.org

View magazine back issues - copperconcept.org

Contact the Editorial Team - editorialteam@copperconcept.org

Upload your project to the website - copperconcept.org

See the European Copper in Architecture Awards - copperconcept.org

Copper Architecture Forum 38, June 2015

Copper Architecture Forum is part of the "European Copper In Architecture Campaign". It is published twice a year and has a circulation of 25,000 copies.

The magazine is distributed to architects and building professionals throughout Europe - and beyond - in English, Czech, French, German, Hungarian, Italian, Polish, Russian and Spanish languages.



Front Cover:
Conservatoire Claude Debussy, Paris, France (page 16)
Photo: Basalt Architecture architects / Sergio Grazia

Bringing this issue to a close are three buildings from the UK showcasing copper and its alloys while demonstrating excellent sustainability credentials. Particular care was taken with the finish of brass panels on a new community centre in London, which achieved a 'BREEAM Excellent' rating (page 32). Finally, it is fascinating to compare two projects, both designed by the same architects and both for the University of Edinburgh: a new children's nursery facility (page 34) and The Edinburgh Centre for Carbon Innovation (page 37).

The Editorial Team

ARCHITECTURAL AWARDS PUBLIC CHOICE

As this issue goes to press, judging of the 2015 European Copper in Architecture Awards comes to an end. The shortlisted projects will be announced on 1st June on our website, where you can vote to select the Public Choice Award winner until 30th August.

All the shortlisted projects will be on exhibition at the Vision event from 2nd - 3rd June at Olympia in London, where visitors can also vote. All the Awards winners will be announced later this year and covered in the next issue of Copper Architecture Forum.

copperconcept.org/awards

Editor in Chief: Robert Pinter

Editor: Chris Hodson RIBA

Editorial team: Ari Lammikko, Chris Hodson, Graeme Bell, Herbert Mock, Hermann Kersting, Irina Dumitrescu, Robert Pinter

E-mail: editorialteam@copperconcept.org

Address: CAF, European Copper Institute, Avenue de Tervueren 168 b-10, B-1150 Brussels, Belgium

Publisher: Nigel Cotton, ECI

Layout and technical production: ECI

Printing: Copy & Consulting Kft., Hungary

Editorial panel:

Birgit Schmitz, De
Kazimierz Zakrzewski, Pl
Marco Crespi, It
Nicholas Hay, UK
Nikolaos Vergopoulos, Gr
Nuno Diaz, Es
Olivier Tissot, Fr
Pia Voutilainen, Se, No, Fi, Dk
Robert Pinter, Hu, Cz, Sk, Ru
Yolande Planet, Benelux

birgit.schmitz@copperalliance.de
kazimierz.zakrzewski@copperalliance.pl
marco.crespi@copperalliance.it
nick.hay@copperalliance.org.uk
nick.vergopoulos@copperalliance.gr
nuno.diaz@copperalliance.es
olivier.tissot@copperalliance.fr
pia.voutilainen@copperalliance.se
robert.pinter@copperalliance.hu
yolande.planet@copperalliance.eu

© Copper Architecture Forum 2015

COPPER ARCHITECTURE FORUM 38



Copper
Architecture
Forum

© Copper Architecture Forum 2015

- 2 Copper Comparisons - editorial comment
- 4 - 7 Dancing Flames - a beacon of copper flames greets visitors to this Polish exhibition pavilion
- 8 - 9 Copper and Timber Confrontation - this visitor centre in Germany celebrates a major archaeological discovery
- 10 - 11 Copper and Timber Shoreline - a cleverly designed boathouse straddles the shore of an Austrian lake
- 12 - 15 Copper and Timber Nature - another visitor centre, this time in Iceland and inspired by its dramatic surroundings
- 16 - 19 Wrap Music - this new Paris music school comes alive with motorised shutters in perforated copper
- 20 - 23 Reaching for the Sky - a new theatre in Poland features a remarkable openable copper roof
- 24 - 27 Copper Box - a deceptively simple but elegant and sophisticated interpretation of the sports hall typology
- 28 - 31 Civic Pride - reconciling the technical demands of archiving with public accessibility, in style
- 32 - 33 A House with Many Doors - brass is a defining element of this London cultural and community centre
- 34 - 36 Sustainable Learning - a children's nursery for the University of Edinburgh has a firm sustainability agenda
- 37 - 39 Carbon Innovation with Copper - a bronze intervention is at the heart of this regeneration creating a new university facility

COPPERCONCEPT.ORG



Read on iPad for free





COPPER BOX

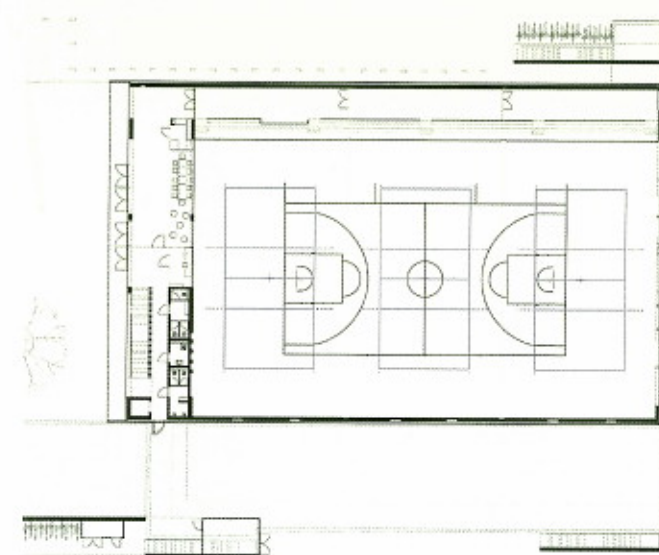
This deceptively simple copper and glass box in Villach, Austria is an elegant and sophisticated interpretation of the sports hall typology. Dietger Wissounig Architekten describe their award-winning design.

The new sports hall is used by the adjoining secondary school, as well as various sports clubs, and is suitable for international ball game tournaments. The elongated structure runs almost parallel to the street which gives it a strong public presence, shields the outdoor sports ground behind it and retains existing parking spaces on the northwest side.

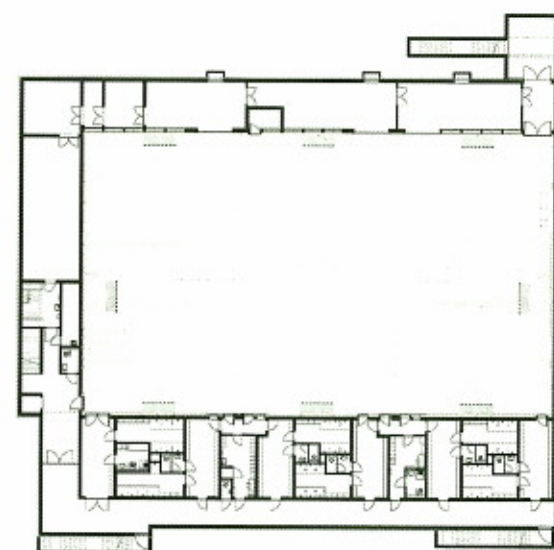
At the front of the building is the main entrance with a small forecourt. A row of trees and additional parking spaces serve as a buffer zone to the busy street. The three-storey building is sunk four metres below street level in order to create a direct underground access to the school and also to give the main hall a total height of 11.8 metres in a form that meets urban development requirements.



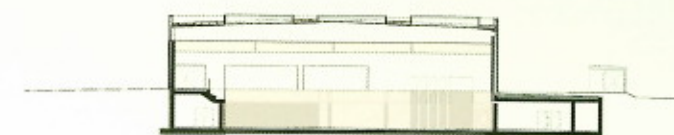
Architect: Dietger Wissounig Architekten
Copper Installer: Reinhard Eder Blechbau
Copper Product: TECU® Classic_punch
Photos: © paul ott fotografiert - unless marked otherwise



GROUND FLOOR



BASEMENT



CROSS SECTION



ELEVATION



Photo: Jasmin Schuller

LIGHT COLOURED INTERIOR

Contrasting with the transparent copper façade on a black background, the interior is dominated by light colours: the floor and walls of the gym are oak-paneled, while all other surfaces - even the floors - are cream white. This creates a friendly atmosphere where sports equipment and the lighting system on the underside of the ceilings remain in the background. The entire ventilation technology is integrated into the walls.

Geothermal preheating of supply air, a heat recovery ventilation system and a corresponding insulation ensure high levels of energy efficiency, resulting in an annual heating demand of 16.9 kWh/m².